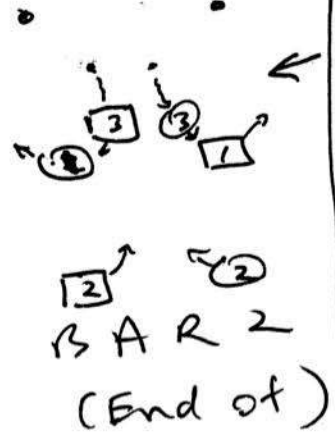
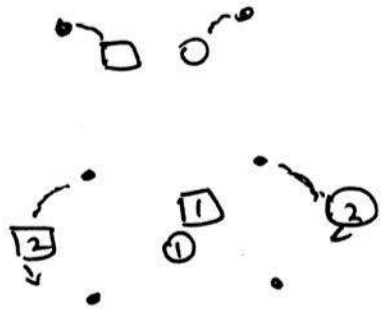
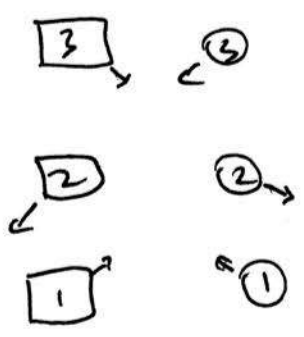


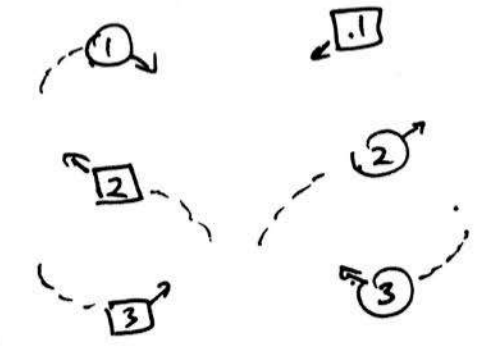
# CROSSOVER REELS of 3



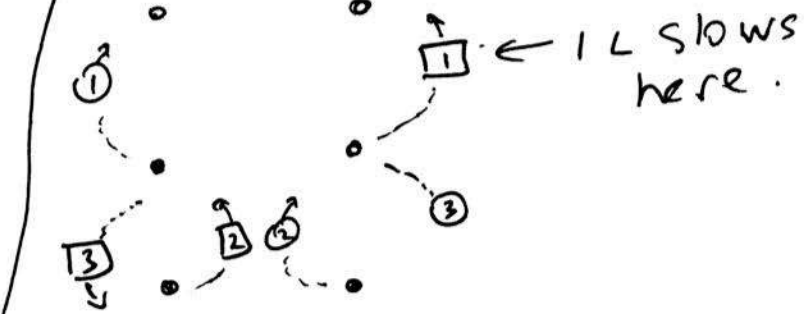
Note:  
By the end of Bar 2 3c here only gone  $\frac{7}{8}$  of a place

TO P BAR 0

BAR 1 (End of)  
1 L fast to here.

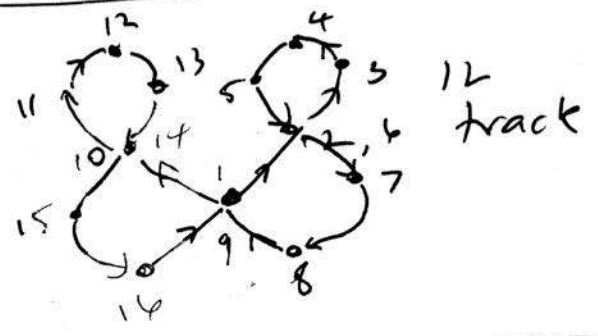


End BAR 4



End BAR 3

Exactly the same tracks 5-8 Except  $\square$  becomes  $\circ$  and  $\circ$  becomes  $\square$



Women  $\square$   
men  $\circ$